

# CalHIVE BHI Depression Measures

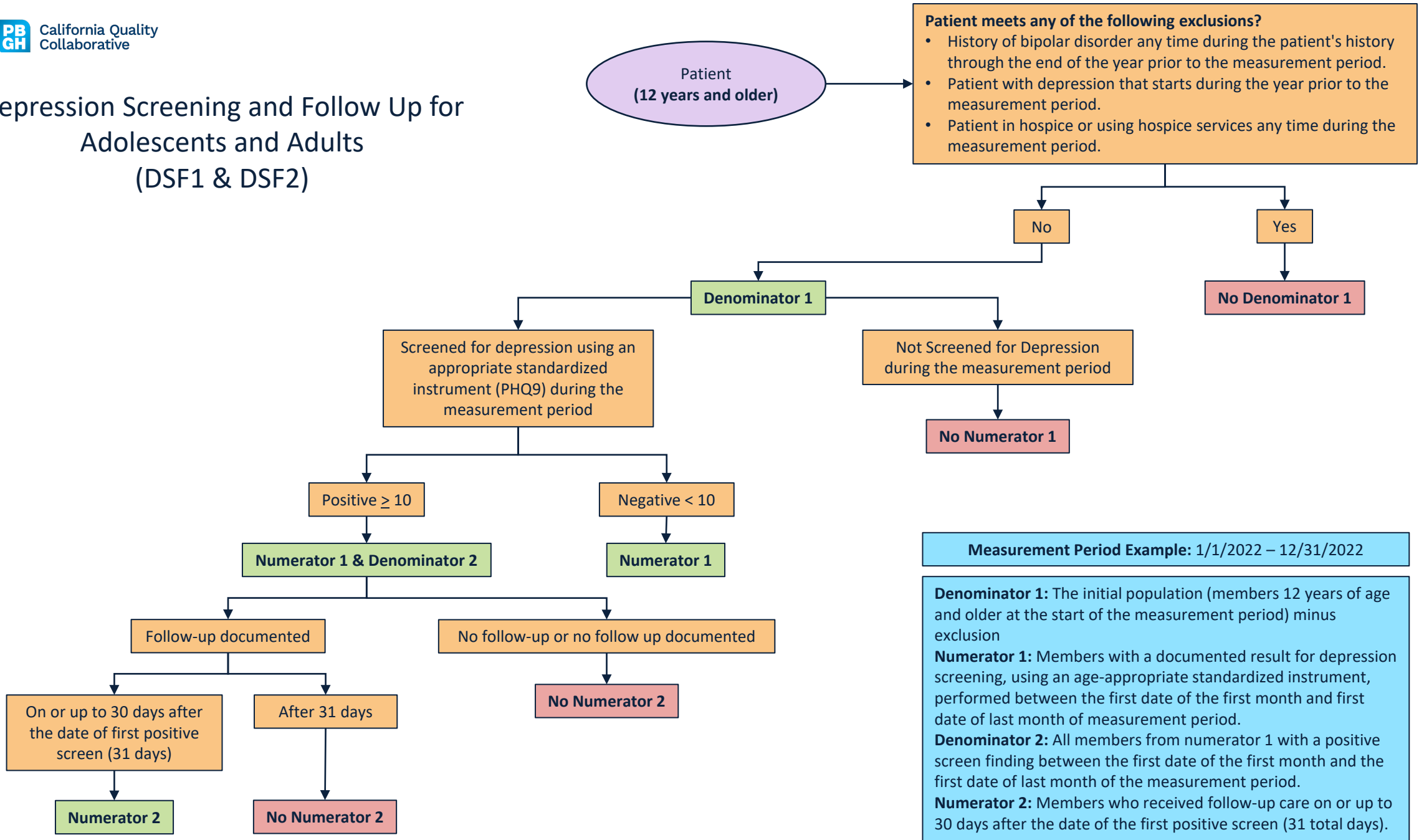
## Depression Screening and Follow Up for Adolescents and Adults:

- The percentage of members 12 years of age and older who were screened for clinical depression using a standardized instrument and, if screened positive, received follow-up care.
  - **DSF1 – Depression Screening:** The percentage of members who were screened for clinical depression using a standardized instrument.
  - **DSF2 – Follow-Up on Positive Screen:** The percentage of members who received follow-up care within 30 days of a positive depression screen finding.

## Depression Remission or Response for Adolescents and Adults:

- The percentage of members 12 years of age and older with a diagnosis of major depression and an elevated PHQ-9 score (>9), who had evidence of response or remission within 4–8 months of the elevated score.
  - **DRR1 – Follow-Up PHQ-9:** The percentage of members who have a follow-up PHQ-9 score documented within 4–8 months after the initial elevated PHQ-9 score.
  - **DRR2 – Depression Remission:** The percentage of members who achieved remission within 4-8 months after the initial elevated PHQ-9 score.
  - **DRR3 – Depression Response:** The percentage of members who showed response within 4-8 months after the initial elevated PHQ-9 score.

# Depression Screening and Follow Up for Adolescents and Adults (DSF1 & DSF2)



**Measurement Period Example:** 1/1/2022 – 12/31/2022

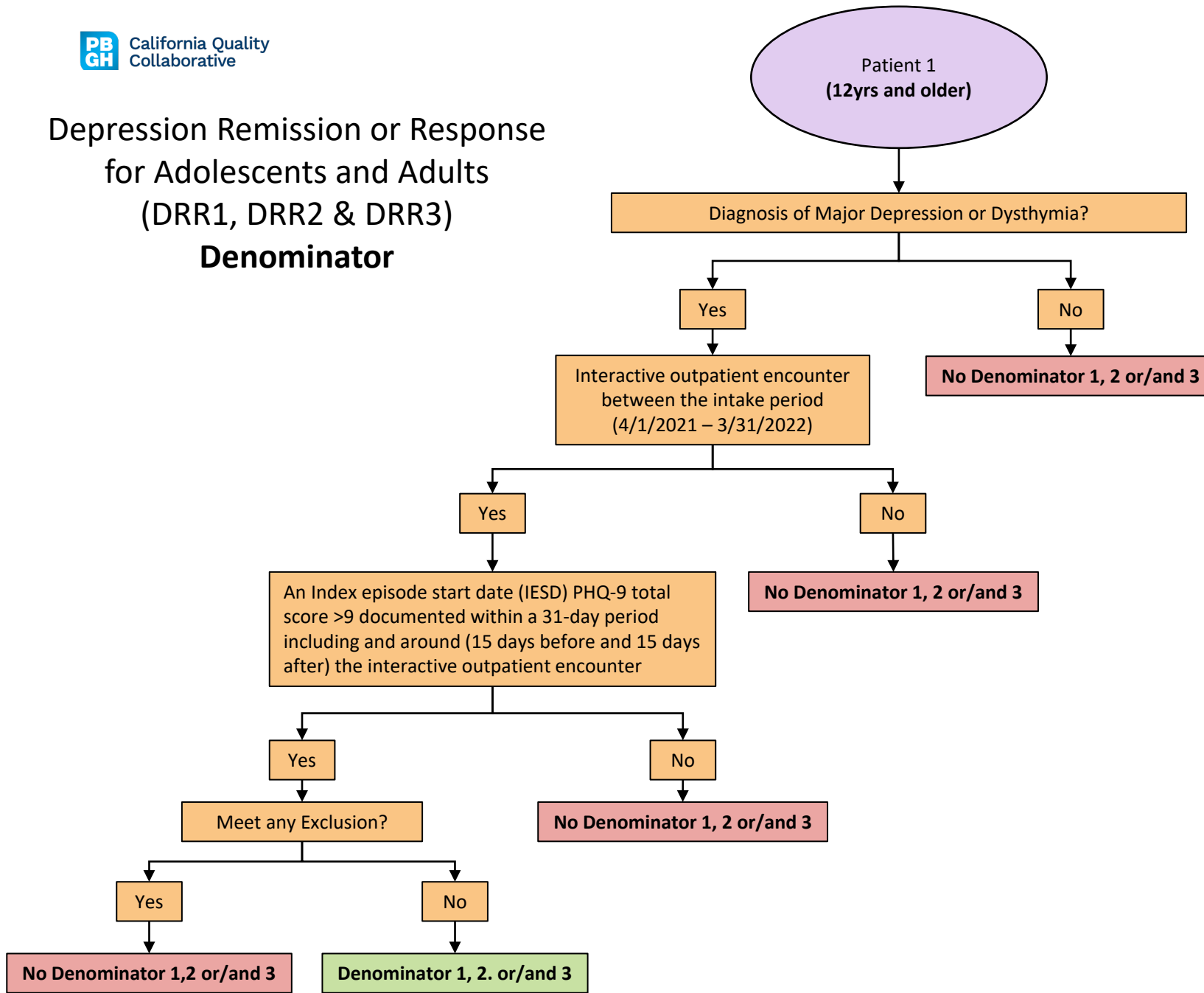
**Denominator 1:** The initial population (members 12 years of age and older at the start of the measurement period) minus exclusion

**Numerator 1:** Members with a documented result for depression screening, using an age-appropriate standardized instrument, performed between the first date of the first month and first date of last month of measurement period.

**Denominator 2:** All members from numerator 1 with a positive screen finding between the first date of the first month and the first date of last month of the measurement period.

**Numerator 2:** Members who received follow-up care on or up to 30 days after the date of the first positive screen (31 total days).

# Depression Remission or Response for Adolescents and Adults (DRR1, DRR2 & DRR3) Denominator



**Measurement Period Example:** 1/1/2022 – 12/31/2022

**IESD:** Earliest date during the intake period where a PHQ9 greater than 9 is documented within a 31-day period including and around (15 days before and 15 days after) an interactive outpatient encounter with a diagnosis of major depression or dysthymia.

**Intake Period:** April 1 of the year prior to the Measurement Period through March 31 of the Measurement Period.

**Exclusion:**  
Patients with any of the following any time during the patient's history through the end of the measurement period:

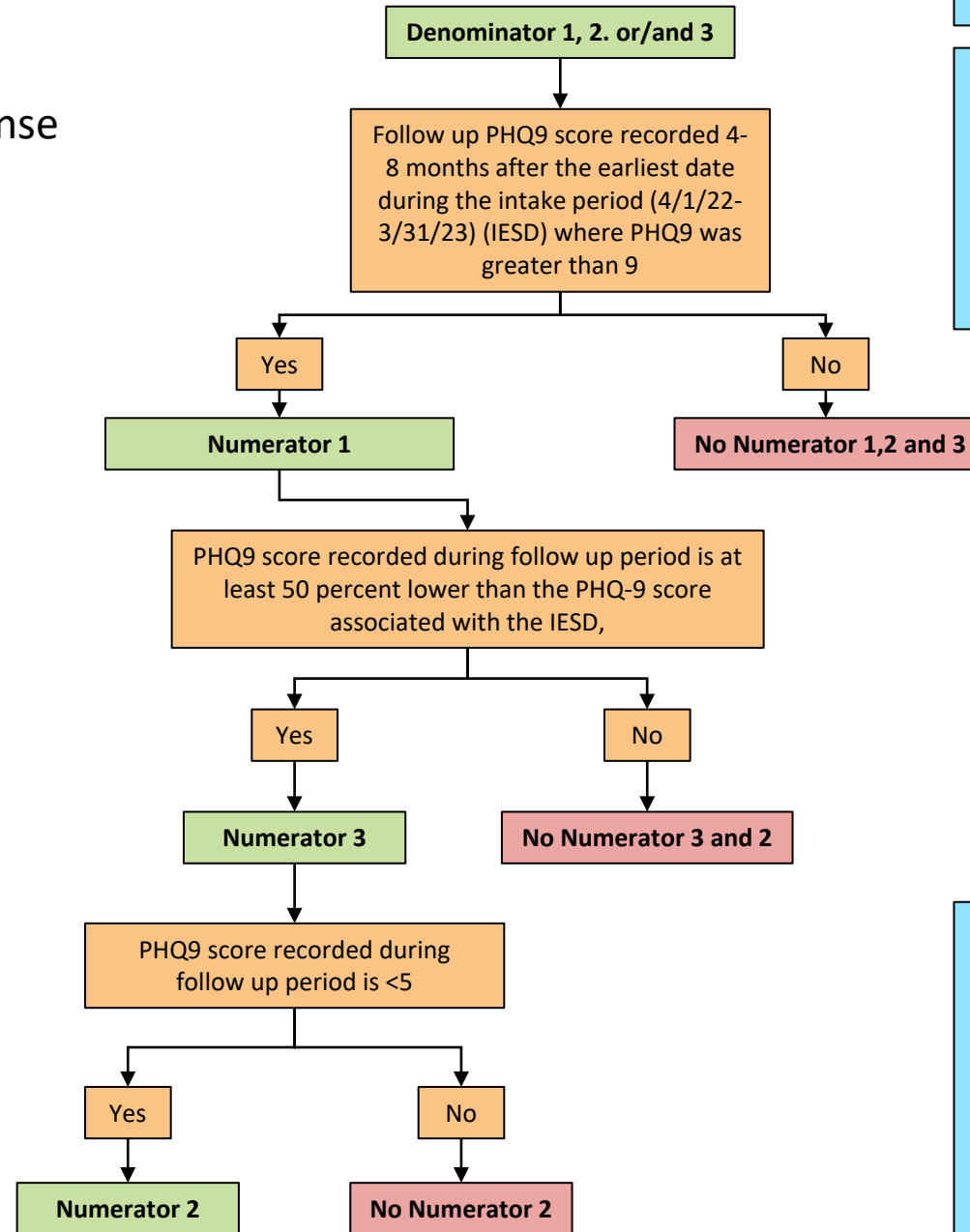
- Bipolar disorder.
- Personality disorder.
- Psychotic disorder.
- Pervasive developmental disorder.

**OR**

- Members in hospice or using hospice services any time during the measurement period.

**Denominator 1, 2, and 3:** Patients 12 years and older as of the start of the intake period who had an interactive outpatient encounter with a diagnosis of major depression or dysthymia and a PHQ-9 total score greater than 9 documented within a 31-day period from the encounter (-15/15+ days).

# Depression Remission or Response for Adolescents and Adults (DRR1, DRR2 and DRR3) Numerator



**Measurement Period Example:** 1/1/2022 – 12/31/2022

**IESD:** Earliest date during the intake period where a PHQ9 greater than 9 is documented within a 31-day period including and around (15 days before and 15 days after) an interactive outpatient encounter with a diagnosis of major depression or dysthymia.

**Intake Period:** April 1 of the year prior to the Measurement Period through March 31 of the Measurement Period.

**Numerator 1:** A PHQ-9 total score in the member’s record during the depression follow-up period.

**Numerator 2:** Members who achieve remission of depression symptoms, as demonstrated by the most recent PHQ-9 score of <5 during the depression follow-up period.

**Numerator 3:** Members who indicate a response to treatment for depression, as demonstrated by the most recent PHQ-9 total score being at least 50 percent lower than the PHQ-9 score associated with the IESD, documented during the depression follow-up period.