

Anthem.®



Cancer Care Solutions, Innovations, and Provider Engagement

Ann Nguyen, PharmD
Director, Oncology Solutions & Clinical Strategy

Engage

each member in
improving their
health

Transform

the relationship
between patient
and provider(s)

Improve

quality of care and
outcomes

Anthem, Inc.

40.4M

MEMBERS

1 in 9

AMERICANS

Collaborating with providers to help transform
care with trusted and caring solutions

Blueprint: Transforming healthcare with trusted and caring solutions

Purpose

Ensure access to high quality, affordable care for members with cancer or advanced illnesses.



Vision

Advance innovations for cancer prevention, diagnosis, treatment and palliative care.

Anthem[®]

Anthem's Cancer Care Quality Program

Goals: Collaborating with Providers to...

Oncology Pathways are detailed, evidence-based treatment protocols for delivering quality cancer care for specific patient presentations, including the type and stage of disease.

Oncology pathways balance the consideration of

1. Clinical efficacy
2. Safety
3. Toxicities (incl. quality of life)
4. Cost (total cost)
5. Scientific advances



Improving the quality of cancer care by promoting evidence-based and patient-centered care



Appropriately aligning financial reimbursement to enhance care coordination and treatment planning



Lowering total cost of care to help improve access to quality and safeguard the affordability of cancer care

Anthem's Cancer Care Quality Program



Alternative Payment Model

Voluntary prospective payment model—enhanced reimbursement for care coordination & treatment planning when treatment pathways are selected



Enhanced reimbursement criteria

PMPM payment while member is on active therapy with cancer treatment pathways



Eligible practices

In-network providers who treat members with cancer



Eligible members

Commercial and Medicare Advantage members (~ 15 million members & expanding)



Cancers included

Focusing on high volume cancers—currently more than 17+ cancer types included in Program



Treatment Episode

Episode begins at the 1st cycle of drug therapies. Length of episode is dependent on the duration of the course, e.g. 3, 6, 9, 12 months.



Data Collection

Web browser application, available 24/7 or direct call with members of provider team.

Anthem[®]

Oncology Provider/Practice Engagement Team



“Our goal is to deliver a best-in-class provider experience that differentiates Anthem.”

“Making meaningful and impactful improvements to the way we support, connect and collaborate with our providers.”




Meaningful Provider/Practice Engagement

Share & evaluate practice data & metrics,
Identify opportunities,
Collaborate to achieved common goals,
Explore future opportunities & strategies

Extended Provider Engagement Team



 Local presence

Clinical Provider Liaison Responsibility



- Serves as the subject matter expert & point of contact for practices, providers and staff for the Cancer Care Quality Program and other oncology initiatives
- Analyzes practice specific quality and key performance metrics regularly to identify opportunities for improvement
- Conduct regular in-person meetings with practices to share practice specific data, state and national benchmarks in identifying opportunities to grow participation and improve quality measures & outcomes
- Engages practice/organization in identifying strategies to address quality and cost opportunities

Provider Reporting Portfolio 1.0

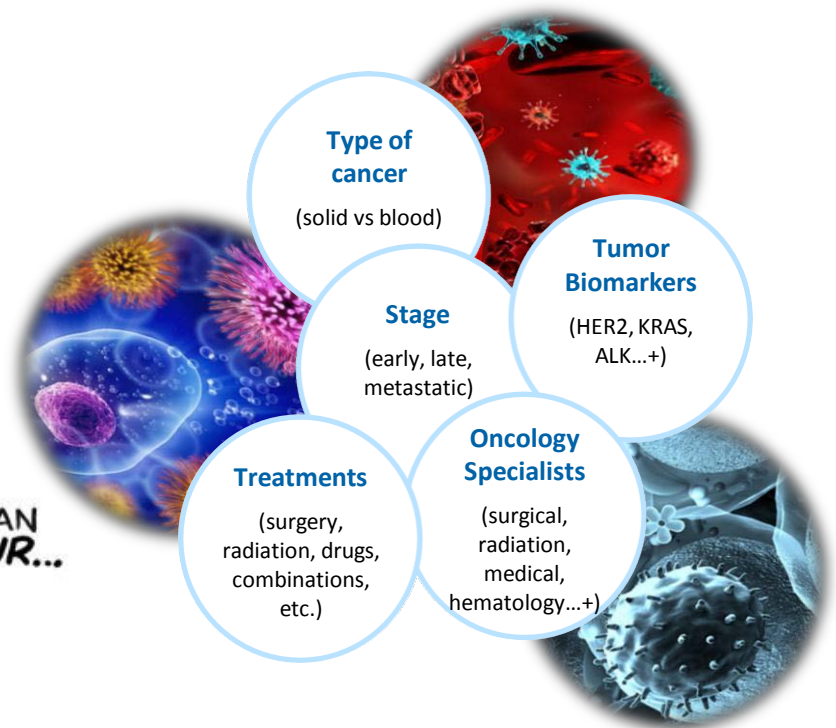
Other Quality Metrics Calendar Qtr	Practice A	State Benchmark	National Benchmark
Total # of mbrs registered in Program to date	X	Y	Z
% of new mbrs starting chemo registered	X	Y	Z
Pathway Adherence Rate	X	Y	Z
% Admitted to ICU w/in last 30 days of life (n = # mbrs w/death record)	X	Y	Z
% Received chemo in last 14 days of life	X	Y	Z
% Enrolled in Hospice	X	Y	Z
Hospice Duration (days)	X	Y	Z
# ER Visits per 1000	X	Y	Z
# Hospitalizations per 1000	X	Y	Z
Average Length of Stay (ALOS)	X	Y	Z
Chemo regimens w/high risk for FN ($\geq 20\%$) (n = # of regimens with H,M,L FN risk)	X	Y	Z
Other metrics...			

Anthem

Cancer is not ONE disease but more than 100



<https://www.talkingtreatment.org/get-started>



Anthem